

# **STIEBEL ELTRON** **Simply the Best**

FOR YOUR HOME COMFORT



# Tempra<sup>®</sup>

WHOLE HOUSE  
TANKLESS ELECTRIC WATER HEATERS

- UNLIMITED SUPPLY OF HOT WATER
- SLEEK DESIGN SAVES SPACE
- PROVEN RELIABILITY
- 3 YEAR WARRANTY



8 8 8 . 6 9 7 . 8 4 5 6

[www.TitanHeater.com](http://www.TitanHeater.com)

# THE BEST ELECTRIC WATER HEATING SYSTEM YOU

## The **Tempra**® series of tankless electric water heaters

is the “Next Big Thing” for today’s households !

Advanced technology, impressive energy-saving performance, and a compact design make it easy to consider a Tempra® hot water system for your home. Tempra® is exclusively manufactured by Stiebel Eltron, a pioneer and leader in tankless water heating technology for the past 80 years.

Endless  
Hot Water !

### Applications

- Homes • Condos • Apartments
- Various Commercial Uses

### Advantages

- **Unlimited Supply of Hot Water** Heats water instantaneously as it is needed. The Tempra® unit completely replaces a conventional tank-type heater, with no disruptions to your comfort and hot water needs.
- **Saves Energy and Reduces Your Electric Bills** Electric tank-type water heaters are subject to stand-by losses which amount to 15-20% of the kWh used. Changing to a tankless system results in savings of at least 15-20% in comparison with an electric tank-type water heater.
- **Sleek Design Saves Space** The Tempra® takes up considerably less space than a conventional tank-type water heater and saves valuable living space.
- **Digital Temperature Control** A digital temperature control allows you to get hot water at the exact temperature for maximum comfort. Advanced microprocessor technology ensures that the water temperature never deviates from the set point. Just set the knob on the front cover, check the digital temperature display, and enjoy water temperatures between 86°F (30°C) and 140°F (60°C). This is the perfect combination of functionality and efficiency – hot water on demand, at the temperature you desire !





# CAN OWN !

- **Proven Reliability Backed by a Three Year Warranty** Stiebel Eltron has an enviable track record of engineering excellence and product quality. The three years parts warranty is unique in the industry. You can depend on the Tempra® unit for many years to come.
- **Seismic Proof Construction** Tempra® is a tankless water heating system and not subject to seismic code. There is no need for preventative construction, as required when using a tank-type water heater.
- **No Venting Required** The units are electric and require no venting. This allows for more flexibility in the positioning of the units.



Tempra® 12-24

# STIEBEL ELTRON

## Tempra® Plus

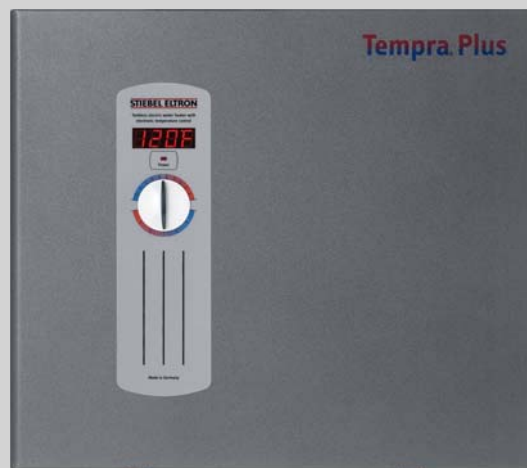
### Featuring Advanced Flow Control

The Tempra® Plus is the most technologically advanced tankless water heater available on the market today.

Advanced Flow Control is exclusive to the Tempra® Plus and ensures a constant temperature output no matter how great the hot water demand is.

Advanced Flow Control technology works by automatically adjusting the flow of water to eliminate unpleasant temperature fluctuation.

What that means to you is a consistently satisfying experience every time, all the time !



Tempra® Plus 12-36



## WHEN PERFORMANCE MATTERS

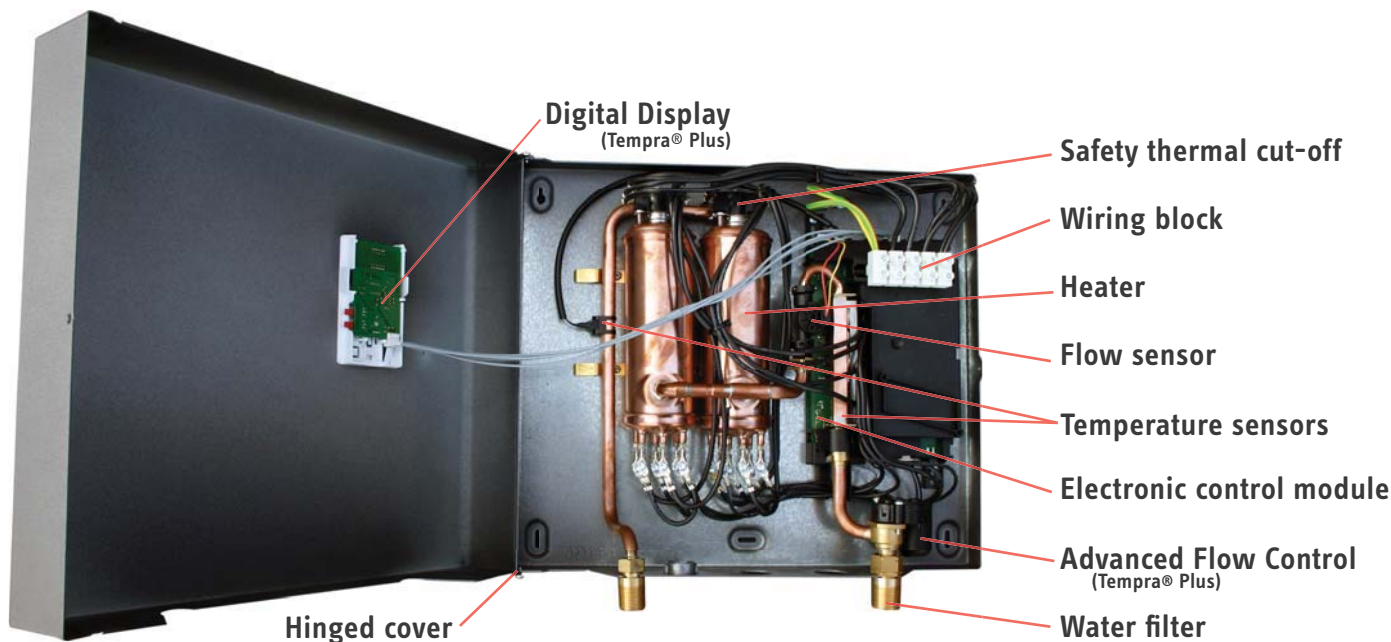
### Introducing Proprietary Technology

#### Open the Cover.

We have done our homework. As an international leader in the tankless electric water heating industry, Stiebel Eltron is proud to have pioneered this tankless water heating technology. The company's German engineering and manufacturing tradition of excellence means that you can depend on its performance for many years to come.

#### Superior, Reliable Performance.

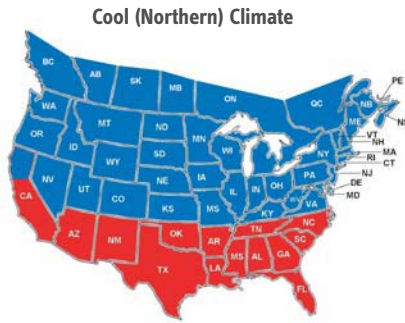
The Tempra® has several temperature and flow sensors which feed their readings into the unit's proprietary microprocessor control. Heating elements are engaged in stages, achieving the temperature you desire. The Tempra® continually monitors the water temperature it produces.



# THE RIGHT SIZE FOR THE APPLICATION

Each household's hot water needs vary. Stiebel Eltron has created a full line of Tempra® tankless hot water heaters to offer the homeowner a wide variety of choices which will efficiently meet their particular capacity requirements.

The sizing chart below provides helpful information that is important when determining which Tempra® model best suits your particular household needs. Stiebel Eltron service representatives are also available to provide assistance and recommendations to homeowners and professional installers.

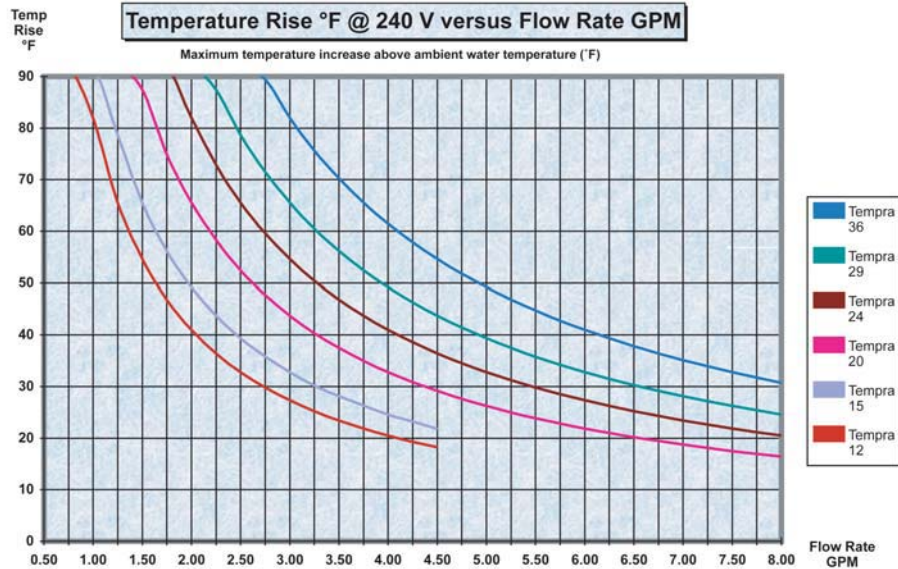


Sleek design makes for easy installation and saves valuable living space

## Tankless Electric Water Heater Sizing Guide

Tempra® Model	12 / 12 Plus	15 / 15 Plus	20 / 20 Plus	24 / 24 Plus	29 Plus	36 Plus
Size House or Condo						
1 Bath						
1 Bath						
2 Baths						
2 Baths						
3 Baths						
3 Baths						
4 Baths						
4 Baths						

WARM CLIMATE
  COOL CLIMATE





# TEMPRA® 12-24 / TEMPRA® PLUS 12-36 TANKLESS ELECTRIC WATER HEATERS

## Technical Data



ISO 9001  
CERTIFIED

**STIEBEL ELTRON**

Temptra® Model		12 / 12 Plus		15 / 15 Plus		20 / 20 Plus		24 / 24 Plus		29 Plus		36 Plus **	
Item Number		223420 / 224196		223421 / 224197		223422 / 224198		223424 / 224199		223425		223426	
Phase		single		2 x single		2 x single		2 x single		3 x single		3 x single	
Voltage	V	208	240	208	240	208	240	208	240	208	240	208	240
Wattage	kW	9	12	10.8	14.4	14.4	19.2	18	24	21.6	28.8	27	36
Amperage	A	44	50	2 x 26	2 x 30	2 x 35	2 x 40	2 x 44	2 x 50	3 x 35	3 x 40	3 x 44	3 x 50
Min. Required circuit breaker size	A	60	60	2 x 40	2 x 40	2 x 50	2 x 50	2 x 60	2 x 60	3 x 50	3 x 50	3 x 60	3 x 60
Recommended wire size	AWG COPPER	6	6	2 x 8	2 x 8	2 x 8	2 x 8	2 x 6	2 x 6	3 x 8	3 x 8	3 x 6	3 x 6
Maximum temperature increase above ambient water temp.	@ 1.50 GPM	41	54	49	65	66	88	82	92	92	92	92	92
	@ 2.25 GPM	27	36	37	43	44	58	54	73	66	87	82	92
	@ 3.00 GPM	20	27	25	33	33	44	41	54	49	66	61	82
	@ 4.50 GPM	-	-	-	-	22	29	27	37	33	44	41	55
Min. water flow to activate unit	GPM/lmin	0.37 / 1.4		0.58 / 2.2		0.58 / 2.2		0.58 / 2.2		0.87 / 3.3		0.87 / 3.3	
Weight	Lb / kg	13.2 / 6.1		15.4 / 7.3		15.4 / 7.3		15.4 / 7.3		17.6 / 8.6		17.6 / 8.6	
Nominal water volume	Gal	0.13 / 0.5		0.26 / 1.0		0.26 / 1.0		0.26 / 1.0		0.39 / 1.5		0.39 / 1.5	
Max. inlet temperature	F / C	131 / 55											
Width	inch / cm	16 5/8 (42.0)											
Height	inch / cm	14 1/2 (36.9)											
Depth	inch / cm	4 5/8 (11.7)											
Working pressure	PSI / BAR	150 / 10											
Tested to pressure	PSI / BAR	300 / 20											
Water connections		3/4" NPT											

\* Suitable for supply with up to 131°F / 55°C    \* Tankless water heaters are considered a non-continuous load    \* Conductors should be sized to maintain a voltage drop of less than 3% under load  
\*\* Requires a 300A main service

## STIEBEL ELTRON FAMILY OF PRODUCTS



### HOT WATER SOLUTIONS

Compact point-of-use water heaters.



Mini™ Tankless



SHC™ Mini-tank



Stiebel Eltron's plant in Holzminden, Germany.

### RENEWABLE ENERGY



Collectors



Storage Tanks



Pump Stations



Thermal solar domestic hot water systems and accessories, plus radiant floor heating systems.



### RESTROOM PRODUCTS

Quiet, modern, touchless automatic hand dryers.



Galaxy™



Galaxy™ M

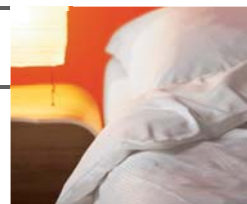
120V & 208-240V

### SPACE HEATING



CK 15E / 20E

120V / 208-240V



Stylish wall-mounted electric fan heaters.

Stiebel Eltron is a world leader in the development of advanced water heating technology. We have pursued engineering excellence and high quality over a period of several decades. This has resulted in products that fulfill the highest expectations in regards to performance and reliability. They are...**Simply the Best.**

Distributed by

[www.TitanHeater.com](http://www.TitanHeater.com)

Tel: 888.697.8456

Fax: 305.675.7974

Email: [info@titanheater.com](mailto:info@titanheater.com)

### STIEBEL ELTRON

17 West Street  
West Hatfield, MA 01088

TOLL FREE 800.582.8423

PHONE 413.247.3380

FAX 413.247.3369

[info@stiebel-eltron-usa.com](mailto:info@stiebel-eltron-usa.com)

[www.stiebel-eltron-usa.com](http://www.stiebel-eltron-usa.com)